

Terpsichore

I. a 5 (a suite of BRANSLE)

Franc. Caroubel

1. Bransle simple. Bis.

6

12

2. Bransle Simple. Bis.

17

22

1. Bransle Gay. Semel.

27

31

2. Bransle Gay. Semel.

35

39

Repeat section last time.

43

3. Bransle Gay. Semel.

47

Repeat section last time.

52

56

Bransle de Poitou

60

64

69

74

79

Repeat section last time.

84

89

1. Bransle Gay Double.

94

99

104

109

2. Bransle Gay Double.

114

119

124

Terpsichore

1. Bransle double de Poitou

130

135

141

2. Bransle double de Poitou

147

152

158

163

168

1. Bransle de Montirande.

173

178

2. Bransle de Montirande. Bis.

183

188

Repeat section last time.

1. Gavotte

194

199

205 **2. Gavotte**

211 **3. Gavotte**

217 **4. Gavotte.**

223

229

235 **5. Gavotte.**

1. 2.

241

247 **6. Gavotte.**

253

259 **Repeat section last time.** **7. Gilotte**

265

271

Terpsichore

I. a 5 (a suite of BRANSLE)

Franc. Caroubel

1. Bransle simple. Bis.

6

2. Bransle Simple. Bis.

12

18

1. Bransle Gay. Semel.

24

28

2. Bransle Gay. Semel.

32

36

Repeat section last time.

40

3. Bransle Gay. Semel.

44

48

Repeat section last time.

52

124

130

1. Bransle double de Poitou

135

140

145

2. Bransle double de Poitou

151

156

161

167

173

1. Bransle de Montirande.

179

185

2. Bransle de Montirande. Bis.

191

Repeat section last time.

197

1. Gavotte

4 Alto 1 *Terpsichore*

202 **2. Gavotte**

208

3. Gavotte
214

220 **4. Gavotte.**

226

232 **5. Gavotte.**

245

251 **6. Gavotte.**

258 **Repeat section last time.**

7. Gilotte
264

270

276

Detailed description of the musical score: The score is for an Alto 1 part titled 'Terpsichore'. It consists of seven Gavottes and one Gilotte. Gavotte 1 (measures 202-208) is in 2/4 time and features a simple melody with a repeat sign. Gavotte 2 (measures 208-214) continues the melody. Gavotte 3 (measures 214-220) introduces a more complex rhythmic pattern. Gavotte 4 (measures 220-226) has a similar melody to Gavotte 1. Gavotte 5 (measures 226-232) features a more active melody. Gavotte 6 (measures 232-245) includes a first and second ending. Gavotte 7 (measures 245-251) has a more complex melody with a repeat sign. The Gilotte (measures 251-258) is a short piece that repeats the last section. The score ends at measure 276 with a final chord.

Terpsichore

I. a 5 (a suite of BRANSLE)

Franc. Caroubel

1. Bransle simple. Bis.

Musical notation for the first Bransle simple. Bis. section, measures 1-11. The music is in G minor (one flat) and common time (C). It consists of a single melodic line on a treble clef staff. The first measure starts with a half note G4, followed by quarter notes A4, Bb4, and C5. The piece concludes with a repeat sign and a double bar line.

2. Bransle Simple. Bis.

Musical notation for the second Bransle Simple. Bis. section, measures 12-23. The music is in G minor and common time. It consists of a single melodic line on a treble clef staff. The first measure starts with a half note G4, followed by quarter notes A4, Bb4, and C5. The piece concludes with a repeat sign and a double bar line.

1. Bransle Gay. Semel.

Musical notation for the first Bransle Gay. Semel. section, measures 24-31. The music is in G minor and 6/4 time. It consists of a single melodic line on a treble clef staff. The first measure starts with a half note G4, followed by quarter notes A4, Bb4, and C5. The piece concludes with a repeat sign and a double bar line.

2. Bransle Gay. Semel.

Musical notation for the second Bransle Gay. Semel. section, measures 32-40. The music is in G minor and 6/4 time. It consists of a single melodic line on a treble clef staff. The first measure starts with a half note G4, followed by quarter notes A4, Bb4, and C5. The piece concludes with a repeat sign and a double bar line.

Repeat section last time.

Musical notation for the first repeat section, measures 41-44. The music is in G minor and 6/4 time. It consists of a single melodic line on a treble clef staff. The first measure starts with a half note G4, followed by quarter notes A4, Bb4, and C5. The piece concludes with a repeat sign and a double bar line.

3. Bransle Gay. Semel.

Musical notation for the third Bransle Gay. Semel. section, measures 45-48. The music is in G minor and 6/4 time. It consists of a single melodic line on a treble clef staff. The first measure starts with a half note G4, followed by quarter notes A4, Bb4, and C5. The piece concludes with a repeat sign and a double bar line.

Repeat section last time.

Musical notation for the second repeat section, measures 49-52. The music is in G minor and 6/4 time. It consists of a single melodic line on a treble clef staff. The first measure starts with a half note G4, followed by quarter notes A4, Bb4, and C5. The piece concludes with a repeat sign and a double bar line.

57

61 **Bransle de Poictou**

66

71

76 **Repeat section last time.**

81

87

1. Bransle Gay Double.

98

103

108 **2. Bransle Gay Double.**

114

119

124

130

135

141

147

2. Bransle double de Poictou

153

159

164

170

1. Bransle de Montirande.

175

181

2. Bransle de Montirande. Bis.

187

193

Repeat section last time.

1. Gavotte

199

205 **2. Gavotte**

211 **3. Gavotte**

217 **4. Gavotte.**

223

230

236 **5. Gavotte.**

242

248 **6. Gavotte.**

254 **Repeat section last time.**

261 **7. Gilotte**

267

274

Terpsichore

I. a 5 (a suite of BRANSLE)

Franc. Caroubel

1. Bransle simple. Bis.



6



12

2. Bransle Simple. Bis.



18



24

1. Bransle Gay. Semel.

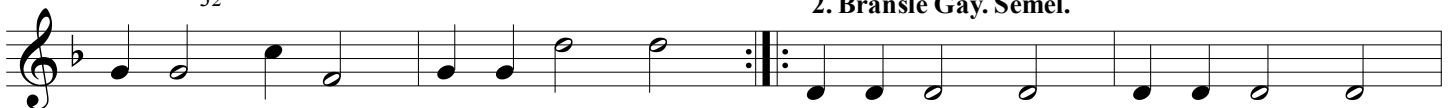


28



32

2. Bransle Gay. Semel.



36



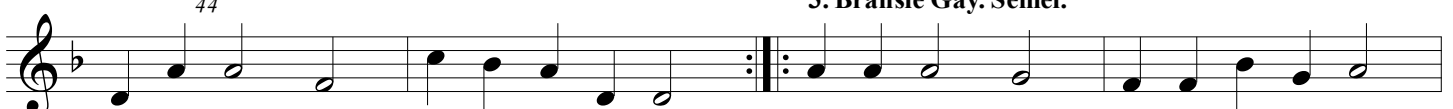
40

Repeat section last time.



44

3. Bransle Gay. Semel.



48



52

Repeat section last time.



56



60

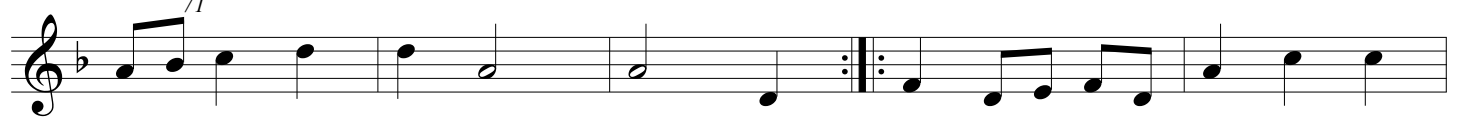
Bransle de Poictou



65

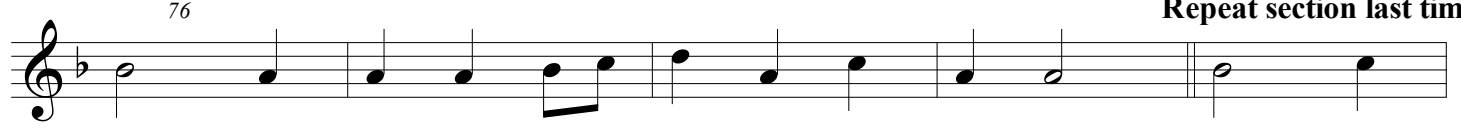


71

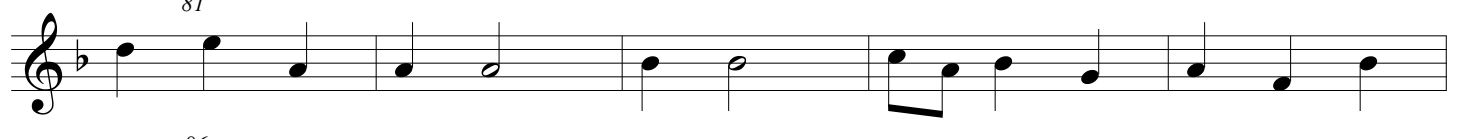


76


Repeat section last time.



81



86

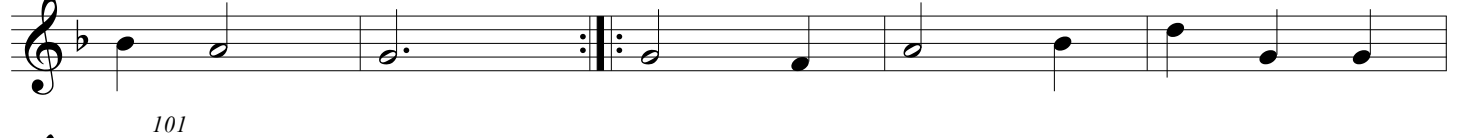


91

1. Bransle Gay Double.



96

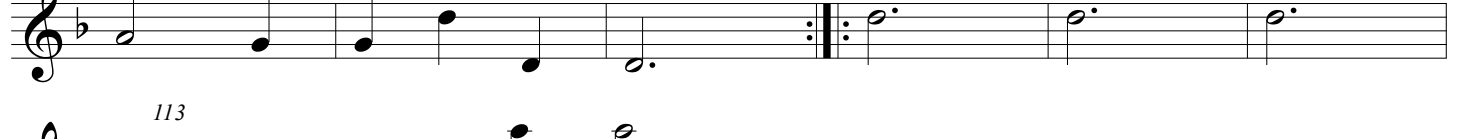


101

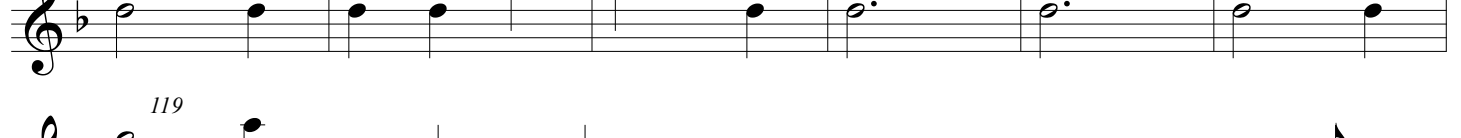


107

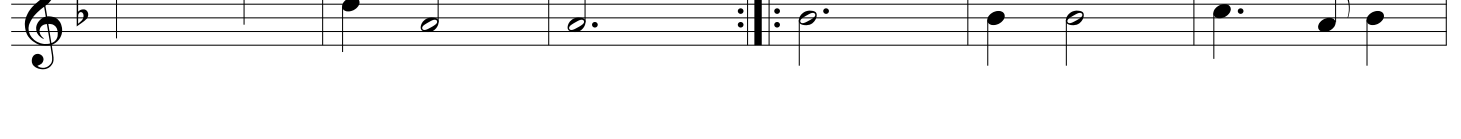
2. Bransle Gay Double.



113



119



125

131

1. Bransle double de Poictou

136

142

148

2. Bransle double de Poictou

153

159

164

170

1. Bransle de Montirande.

175

181

2. Bransle de Montirande. Bis.

187

193

Repeat section last time.

1. Gavotte

199

205 **2. Gavotte**

211 **3. Gavotte**

217 **4. Gavotte.**

223

229

236 **5. Gavotte.**

242

248 **6. Gavotte.**

255 **Repeat section last time.**

262 **7. Gilotte**

268

275

Terpsichore

I. a 5 (a suite of BRANSLE)

Franc. Caroubel

1. Bransle simple. Bis.



6



12

2. Bransle Simple. Bis.



18



24

1. Bransle Gay. Semel.



28



32

2. Bransle Gay. Semel.

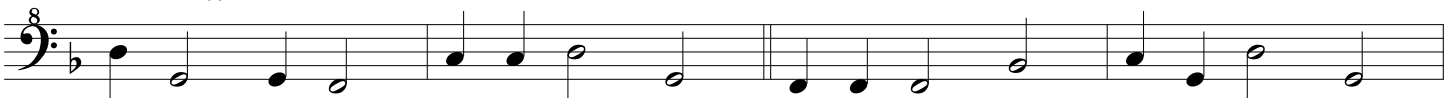


36



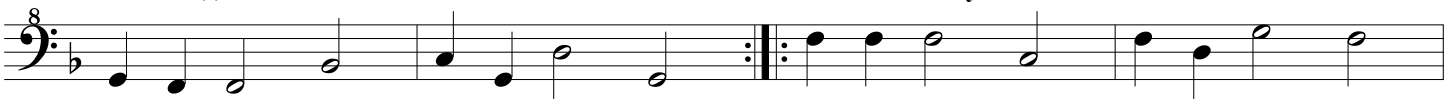
40

Repeat section last time.



44

3. Bransle Gay. Semel.



48



53

Repeat section last time.



57

62 **Bransle de Poitou**

67

72

77

Repeat section last time.

83

88

1. Bransle Gay Double.

93

99

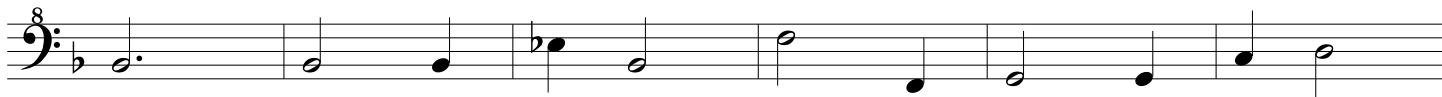
104

110 **2. Bransle Gay Double.**

115

121

127



133

1. Bransle double de Poictou

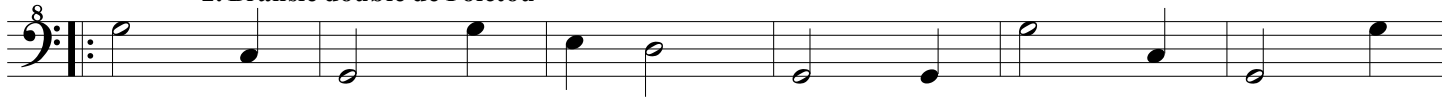
138



144



150

2. Bransle double de Poictou

156



162



168



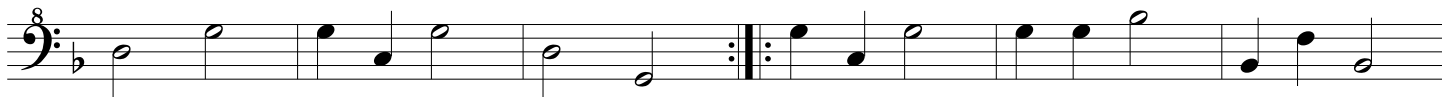
174



180



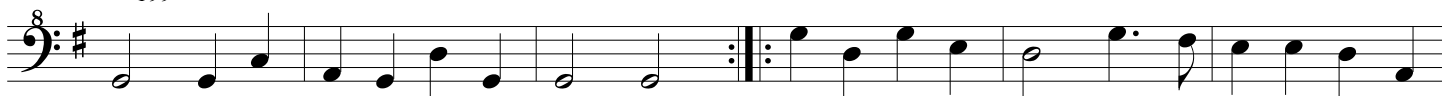
187



193

Repeat section last time.**1. Gavotte**

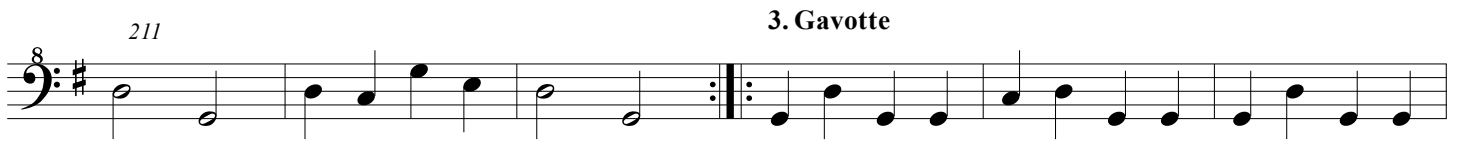
199



205 **2. Gavotte**



211 **3. Gavotte**



217 **4. Gavotte.**



223



230



237 **5. Gavotte.**



243




249 **6. Gavotte.**



256 **Repeat section last time.**



262 **7. Gilotte**



269



276

